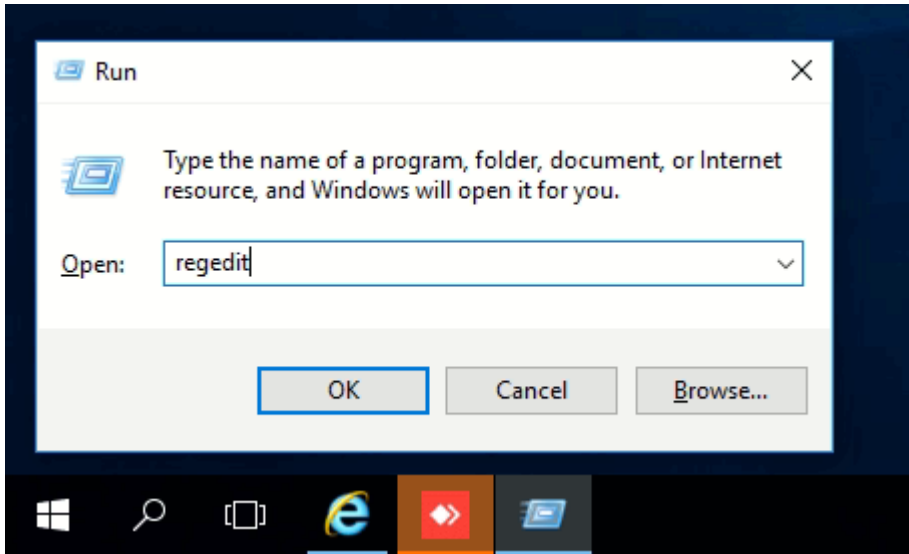
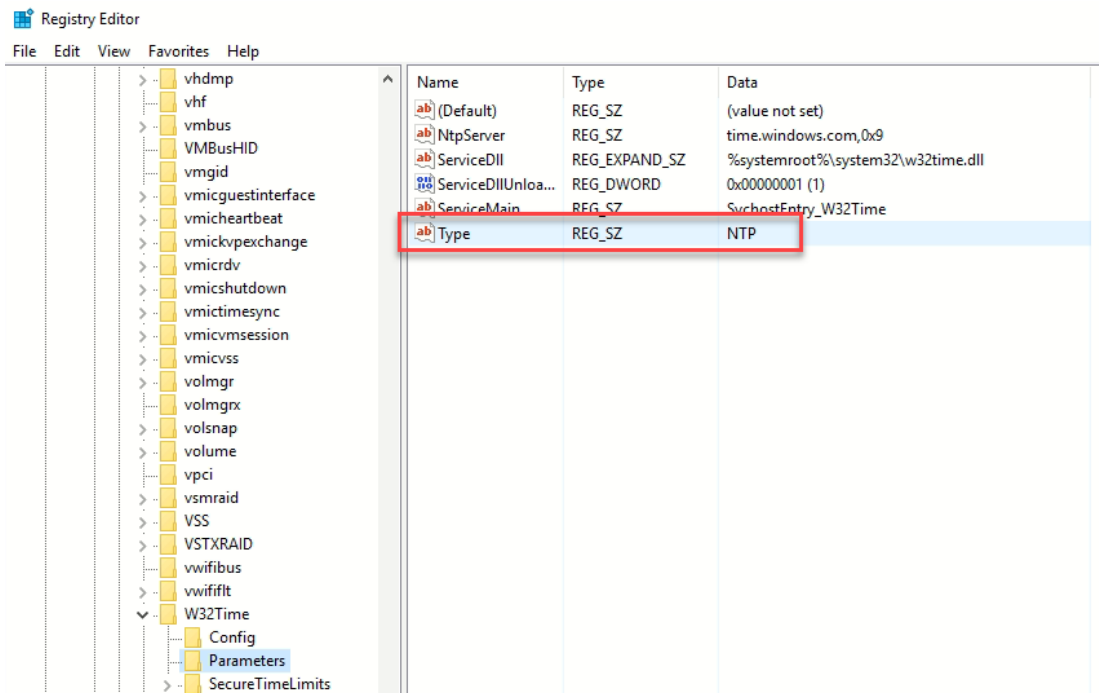


How to Sync Camera Time Stamp from Windows 10

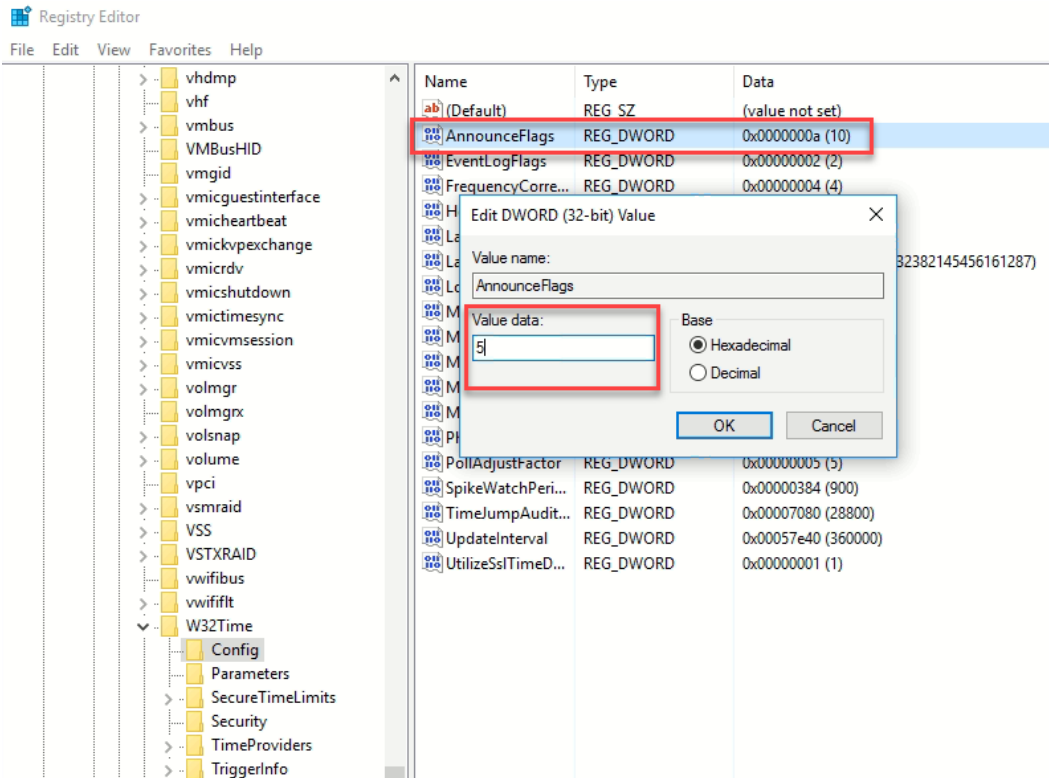
1. Windows key + R key, press regedit



2. Open register editor and find info as below
 HKEY_LOCAL_MACHINE\SYSTEM\CurrentControlSet\services\W32Time\Parameters
 Name=Type, Type=REG_SZ, Value data=NTP

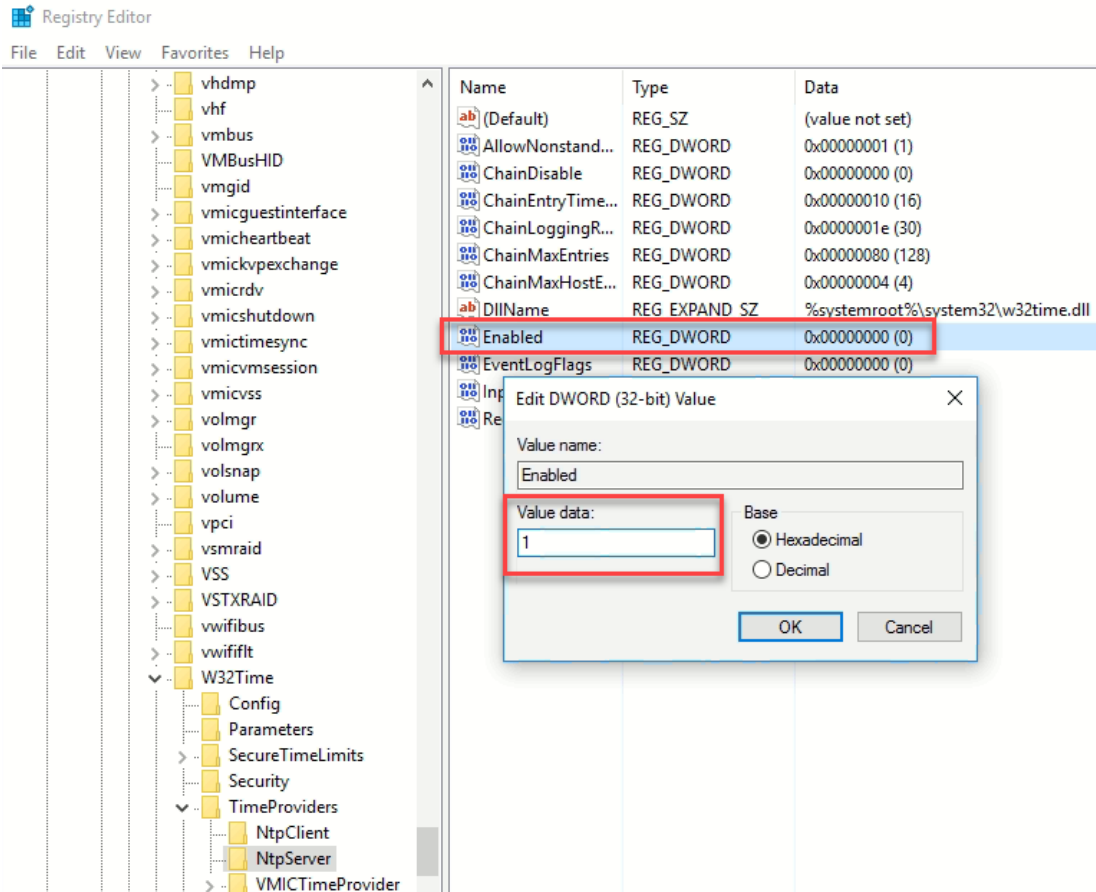


3. Find info as below
 HKEY_LOCAL_MACHINE\SYSTEM\CurrentControlSet\Services\W32Time\Config\AnnounceFlags
 Name= AnnounceFlags, Type=REG_DWORD, Value data=5

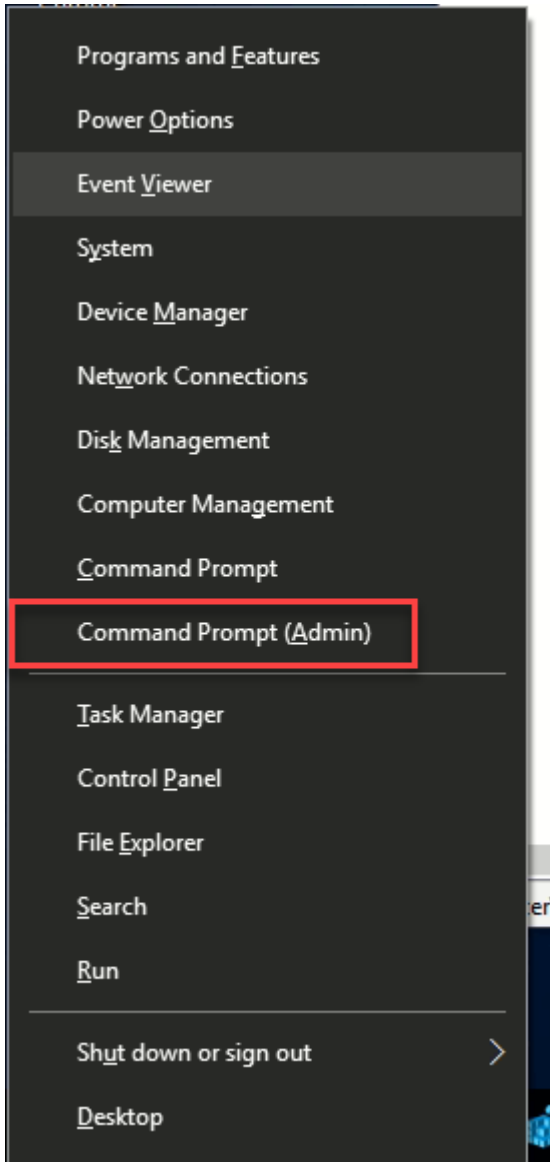


4. Find info as below

HKEY_LOCAL_MACHINE\SYSTEM\CurrentControlSet\Services\W32Time\TimeProviders\NtpServer
 Name= Enabled, Type=REG_DWORD, Value data=1



5. Windows key + X key, select Command Prompt(Admin)

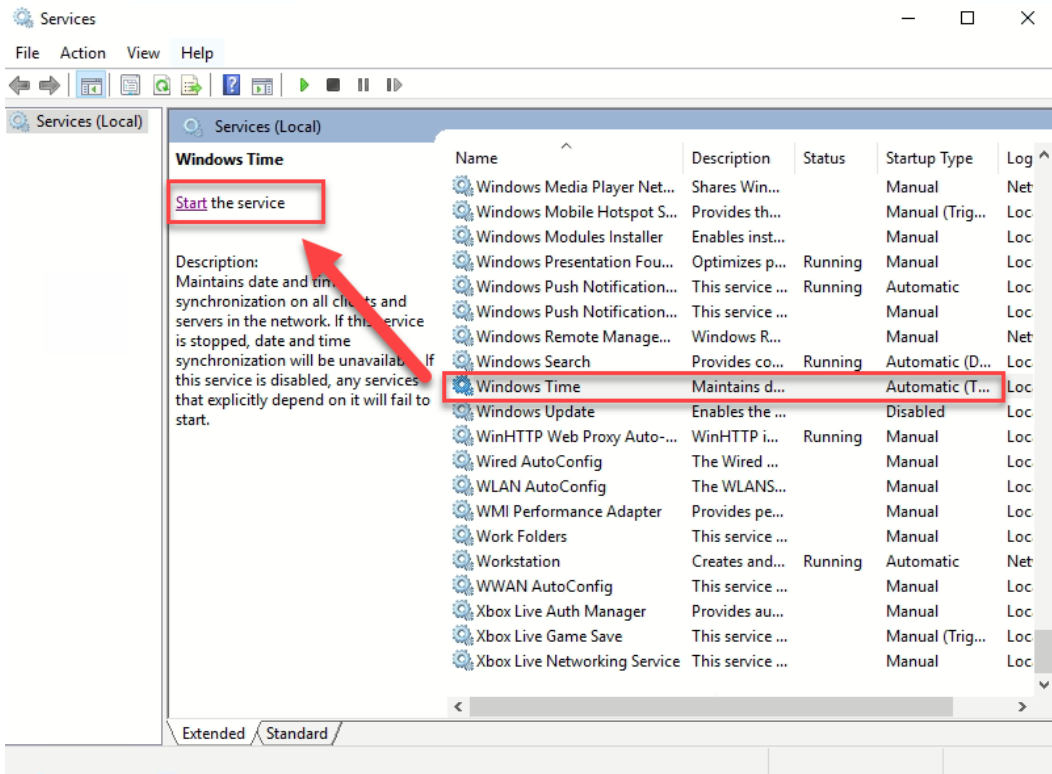


6. Fill in sc config w32time start= auto

```
Administrator: Command Prompt
Microsoft Windows [Version 10.0.14393]
(c) 2016 Microsoft Corporation. All rights reserved.

C:\Windows\system32>sc config w32time start= auto
[SC] ChangeServiceConfig SUCCESS
```

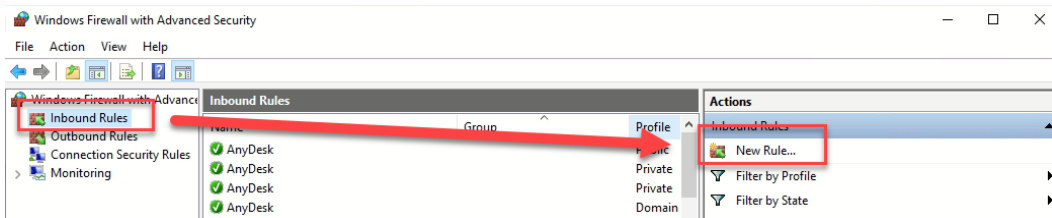
7. Open windows Service and find the widows time, then press start button to enable the service.



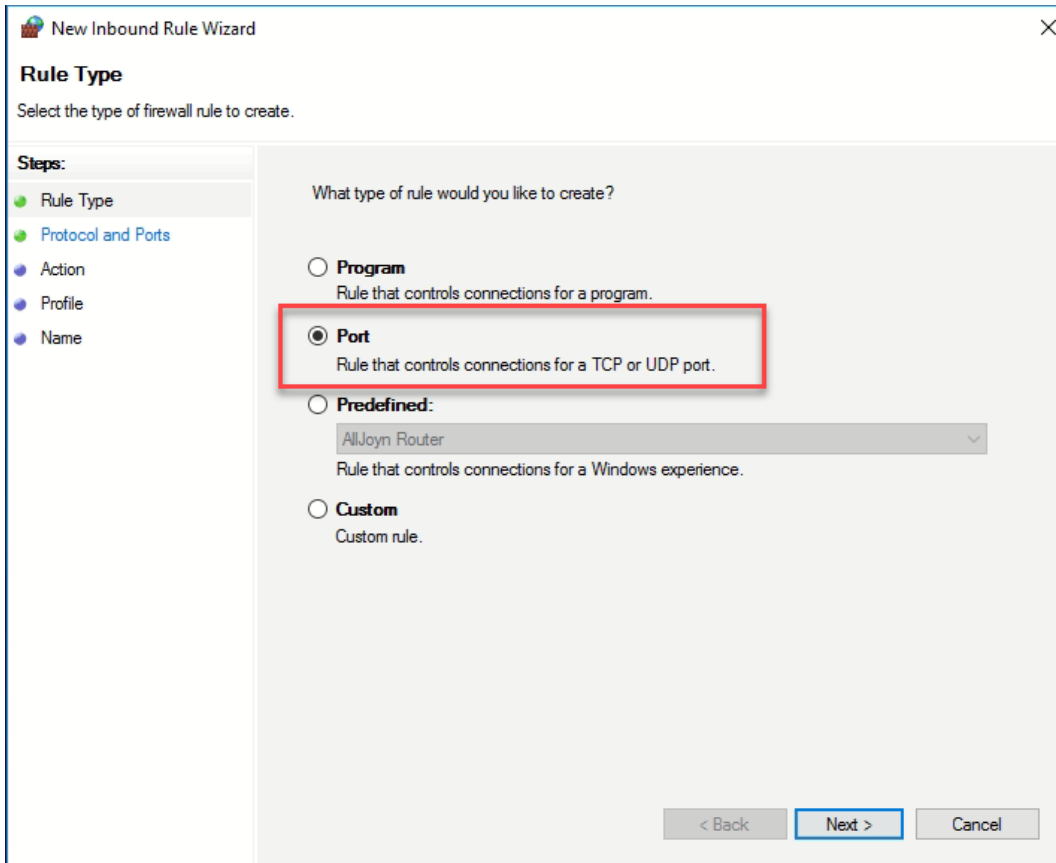
8. Back to command prompt(Admin), then fill in w32tm /config /update

```
C:\Windows\system32>w32tm /config /update
The command completed successfully.
```

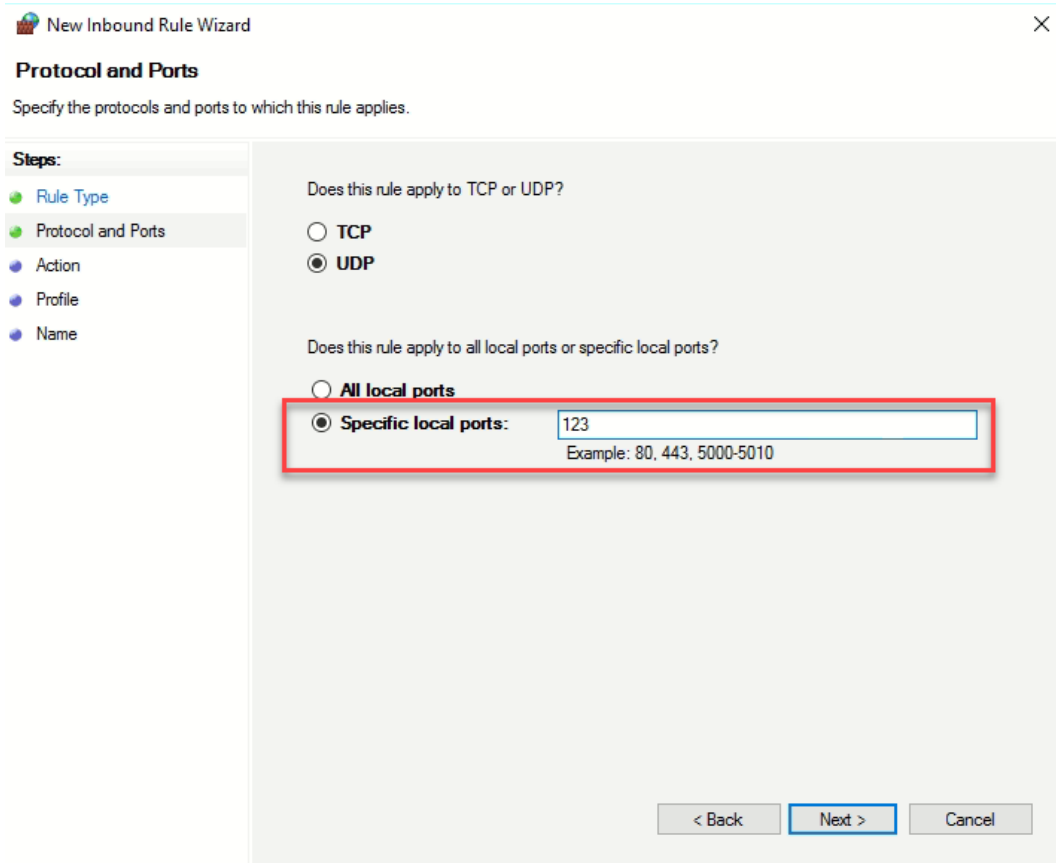
9. Go to Windows Firewall and add Inbound Rule



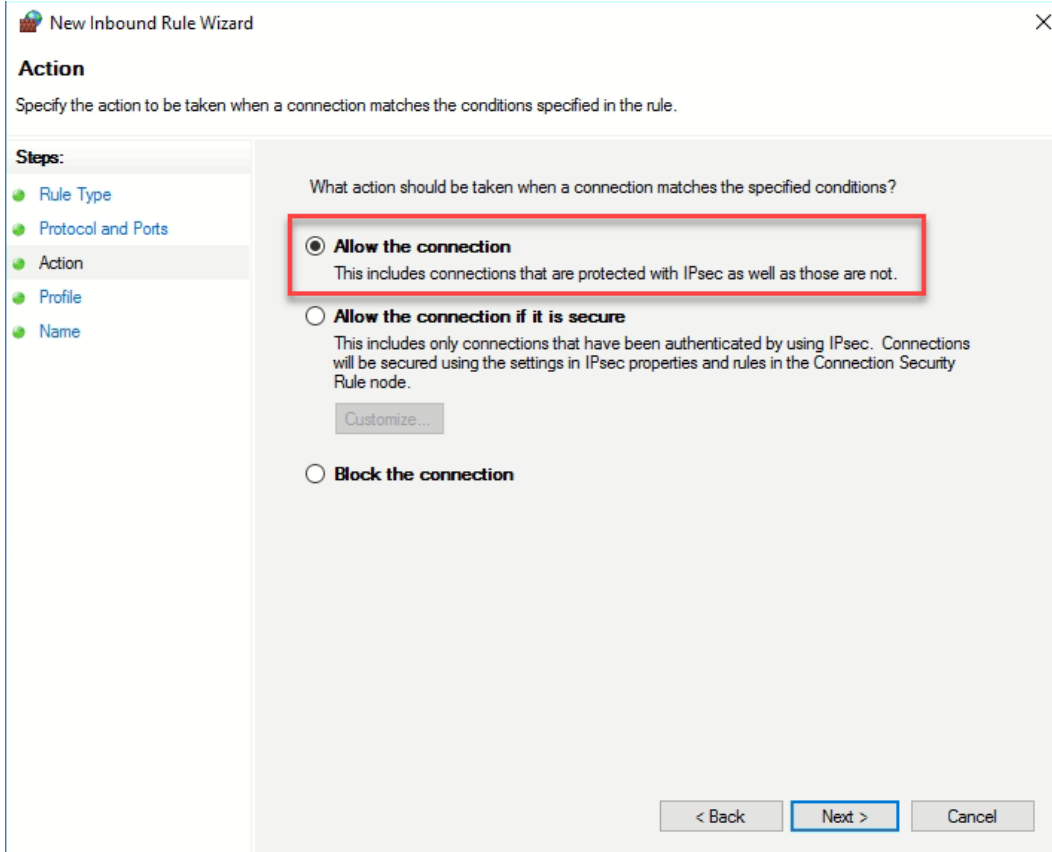
10. Select Port



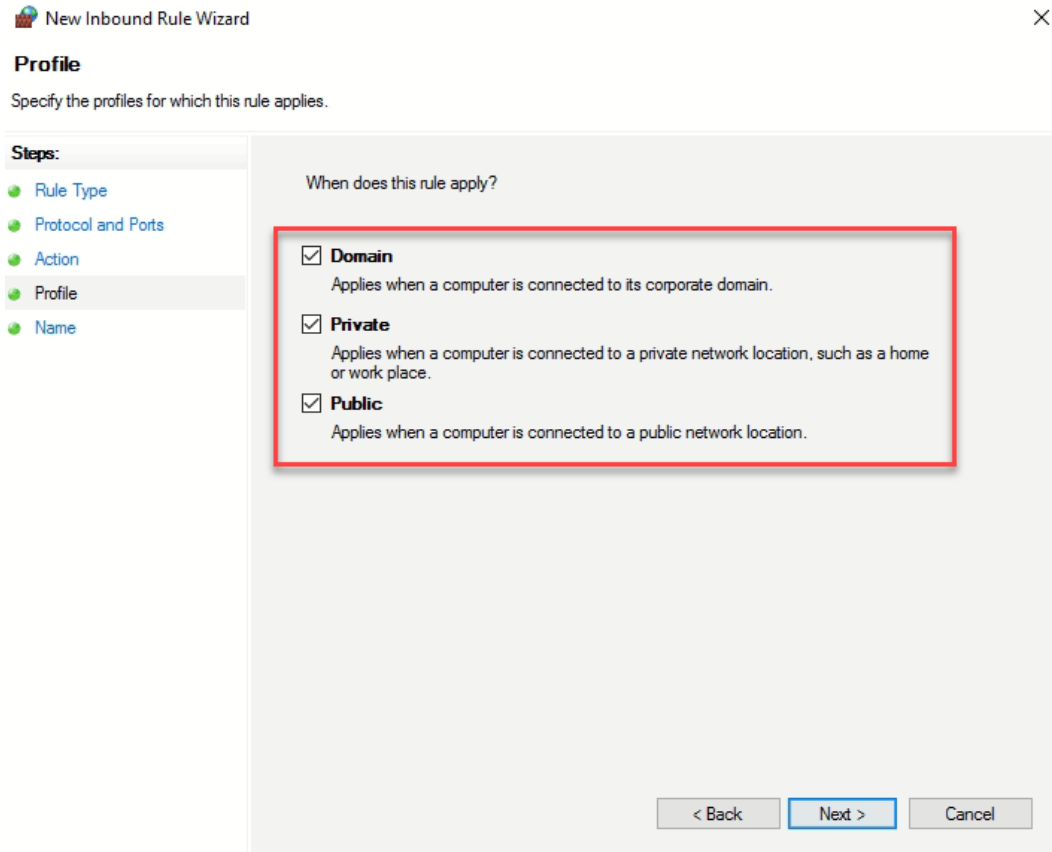
11. Fill in 123



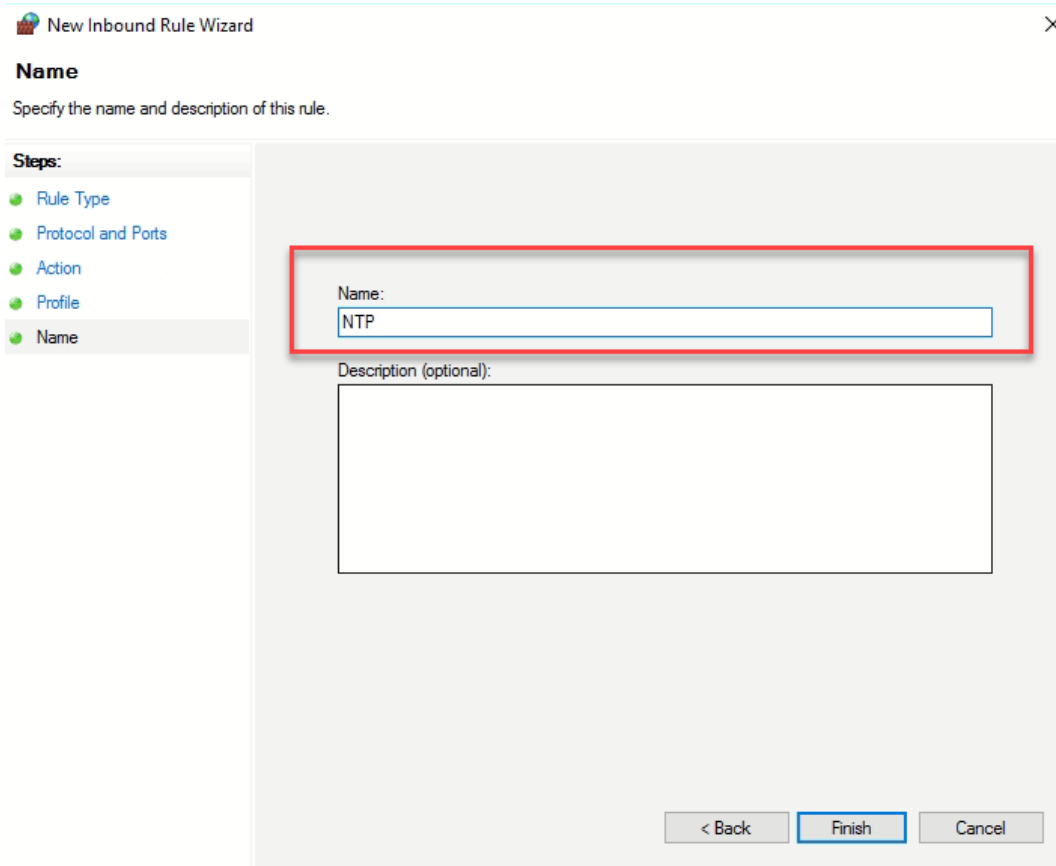
12. Select Allow the Connection



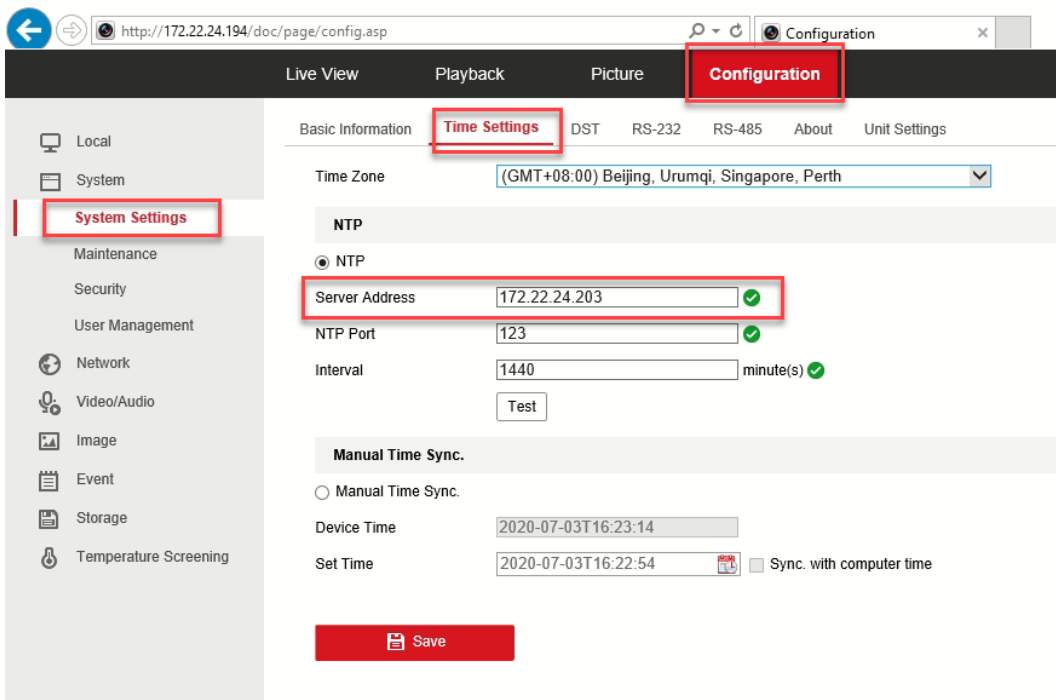
13. Apply all rules



14. Give rule name



15. Open camera setting via browser, choose Time Settings and fill in the NTP Server Address which is windows 10 unit IP address, then save the setting.



16. Test NTP server, it will show Testing succeeded when finish.

Live View Playback Picture **Configuration**

Basic Information **Time Settings** DST RS-232 RS-485 About Unit Settings

Time Zone (GMT+08:00) Beijing, Urumqi, Singapore, Perth

NTP

NTP

Server Address 172.22.24.203 ✓

NTP Port 123 ✓

Interval 1440 minute(s) ✓

Test

Manual Time Sync.

Manual Time Sync.

Device Time 2020-07-03T16:26:56

Set Time 2020-07-03T16:22:54 Sync. with computer time

Save

Note ✕

Testing succeeded.

OK