

ADVANTECH

Enabling an Intelligent Planet

Infection Prevention Screening Monitor User Guide (V1.0.2)

V1.1, 2020.07



1. System Starting

1.1. Log in

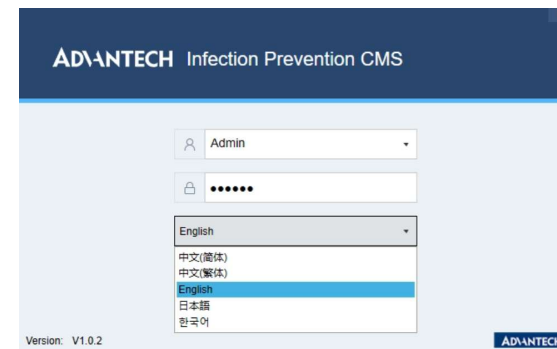
1. Open the "InfectionCMS" on the desktop



2. Use default account "Admin" and "123456" to login, you can let it auto login, next time it can skip this login step.

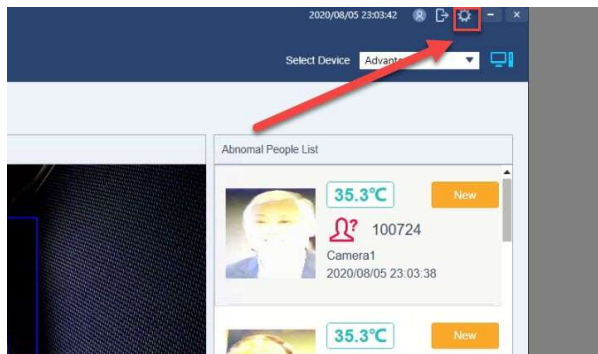


3. Select language and re-login

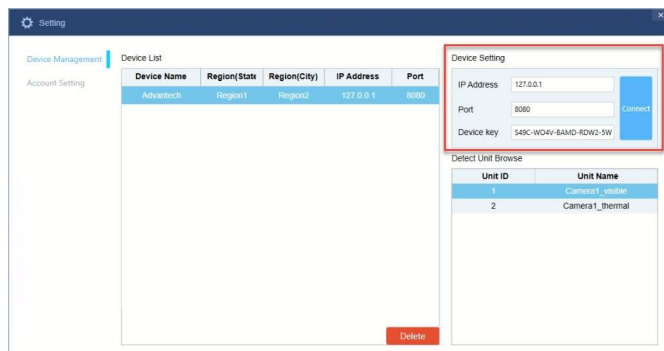


1.2. Connect to server

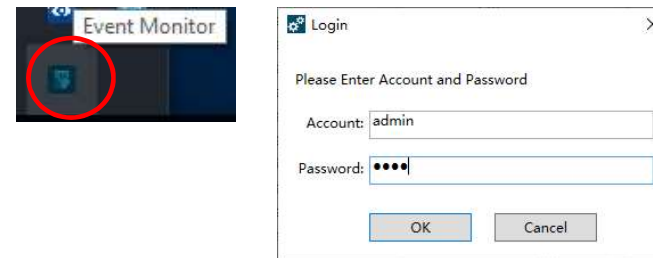
1. Open the "Setting" page.



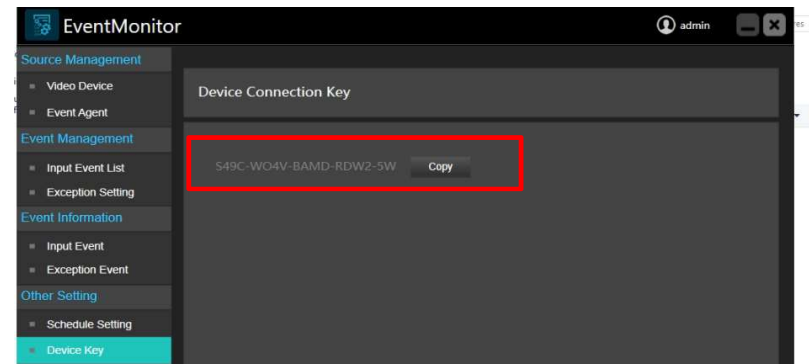
2. Go to Device Management and Input the information of the VideoSense Edge you want to connect, its IP address, Port (8080) and Device Key.



3. Find Event Monitor icon in system tray and double-click to open it



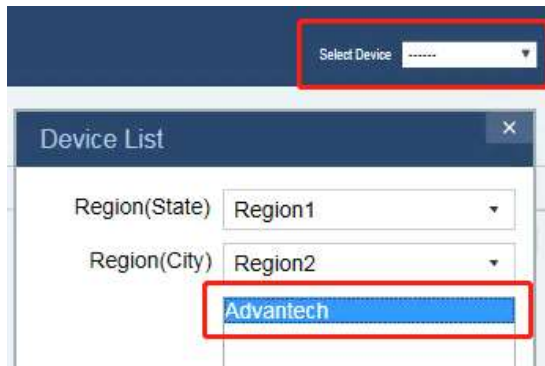
4. Find the device key on Other Setting of Event Monitor



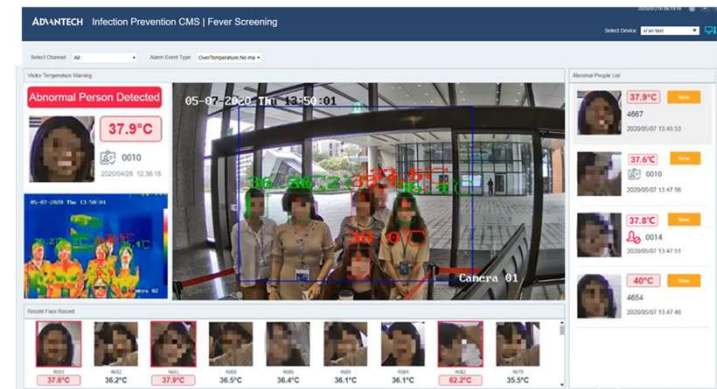
2. Thermal Screening Function

2.1. Real-time Monitoring

1. Select the target and double-click it.



2. Select channel, then you will see the live video.



2.2. Monitor the face temperature

- Select channels to be monitored
- Select alarm event types that will be enabled.

- Show abnormal case in real time.

- List all events history

- This area shows thermography image

- Recent Face Record

It will record all the recent face (last 90 faces) from selected channels and its temperature info here.

Co-Creating the Future of the IoT World

