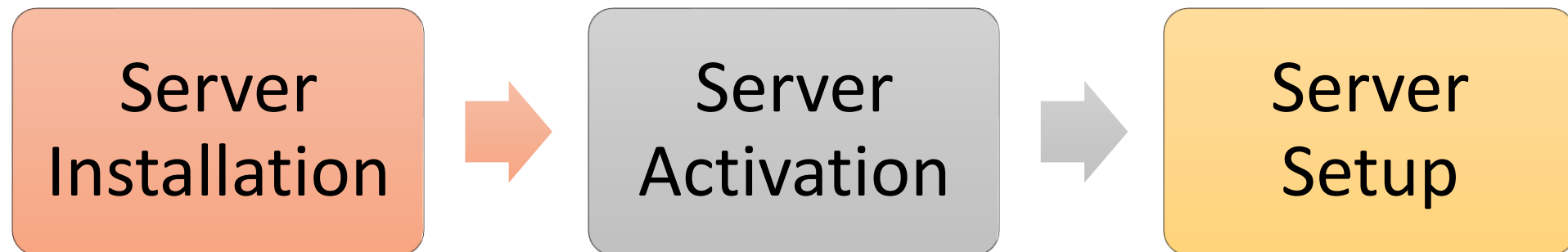


Quick Start Guide Windows Server – Private Cloud

2022.Q2

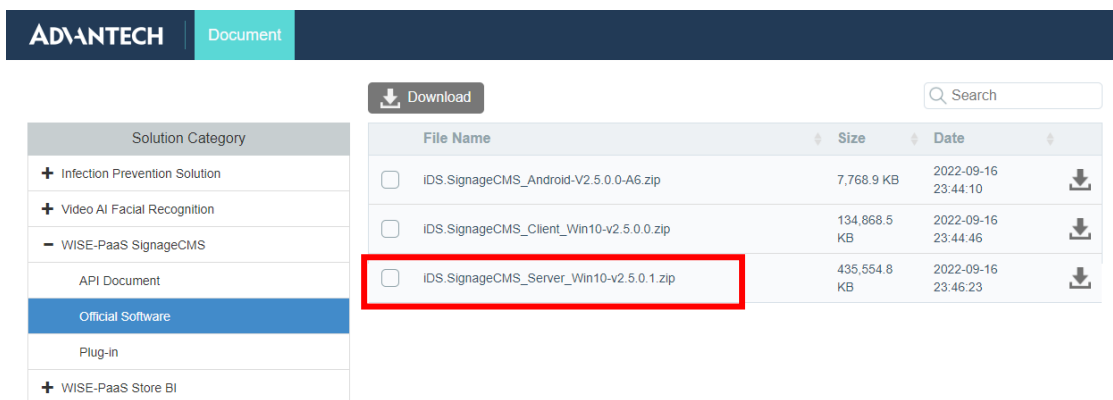


Server Installation, Activation & Setup



Windows Server Installation

1. Goto <https://download.wise-apps.com> , then download server software.

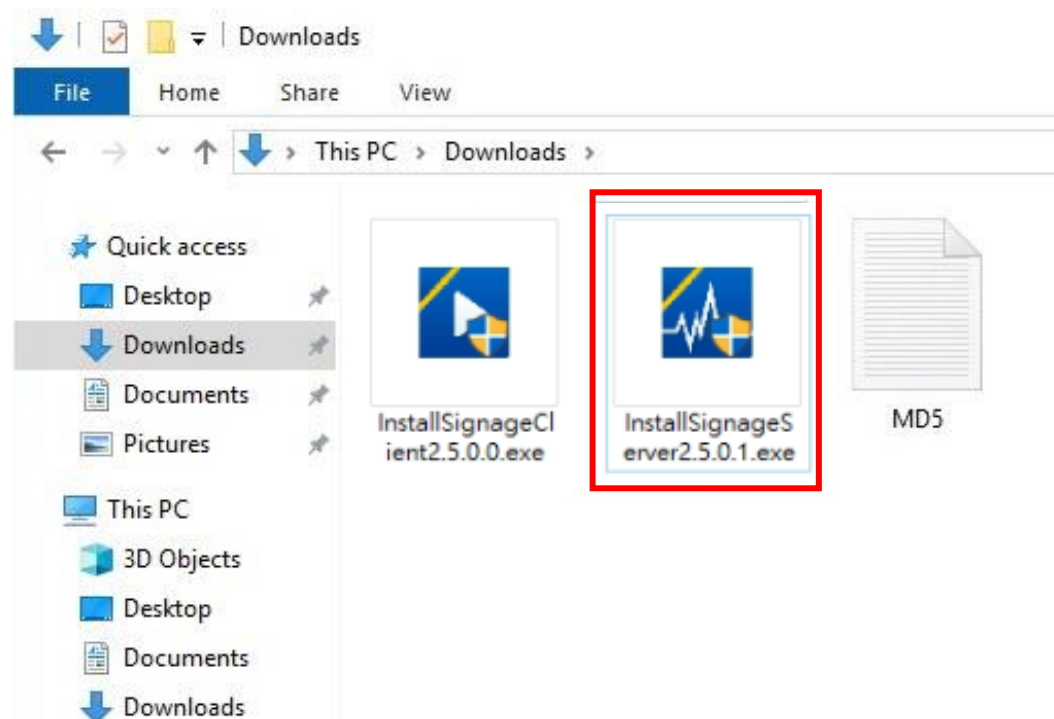


ADVANTECH Document

Download Search

Solution Category	File Name	Size	Date
+ Infection Prevention Solution	<input type="checkbox"/> IDS.SignageCMS_Android-V2.5.0.0-A6.zip	7,768.9 KB	2022-09-16 23:44:10
+ Video AI Facial Recognition	<input type="checkbox"/> IDS.SignageCMS_Client_Win10-v2.5.0.0.zip	134,868.5 KB	2022-09-16 23:44:46
- WISE-PaaS SignageCMS	<input type="checkbox"/> IDS.SignageCMS_Server_Win10-v2.5.0.1.zip	435,554.8 KB	2022-09-16 23:46:23
API Document			
Official Software			
Plug-in			
+ WISE-PaaS Store BI			

2. Unzip the file, then click installSignageServer exe file to run the wizard.



Downloads

File Home Share View

This PC > Downloads >

Quick access

- Desktop
- Downloads
- Documents
- Pictures

This PC

- 3D Objects
- Desktop
- Documents
- Downloads

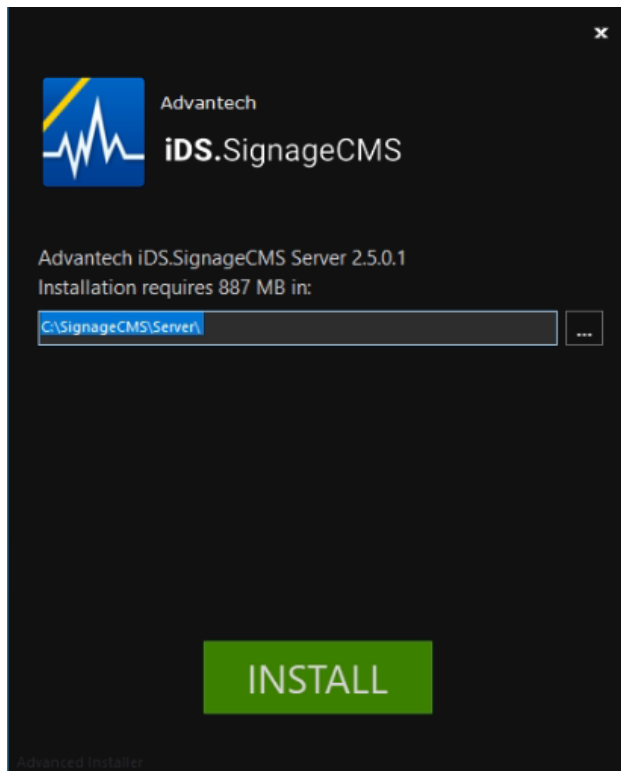
InstallSignageClient2.5.0.0.exe

InstallSignageServer2.5.0.1.exe

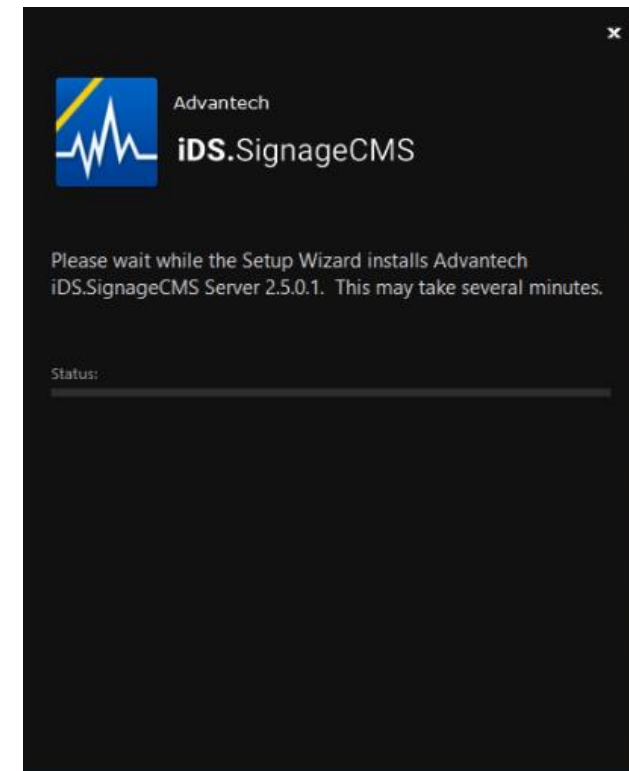
MD5

Windows Server Installation

3. Click install button.

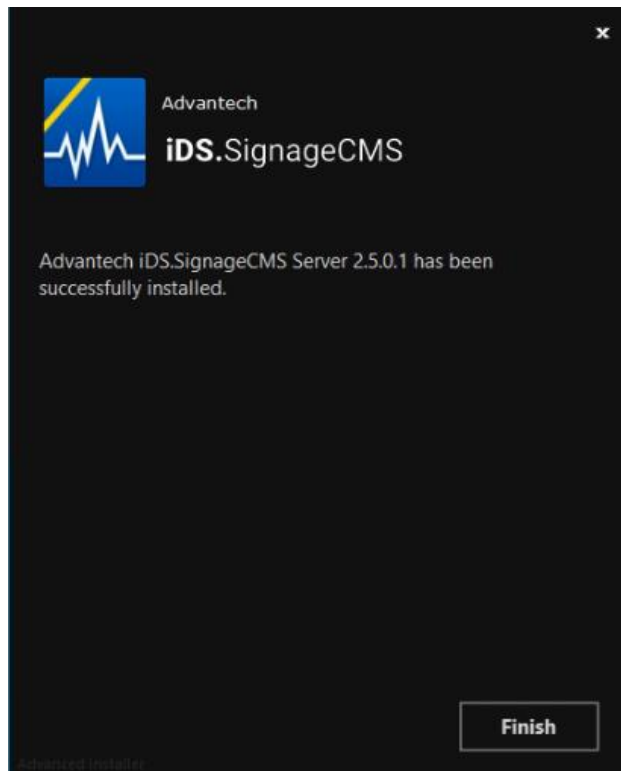


4. The progress will take 5-10 mins.

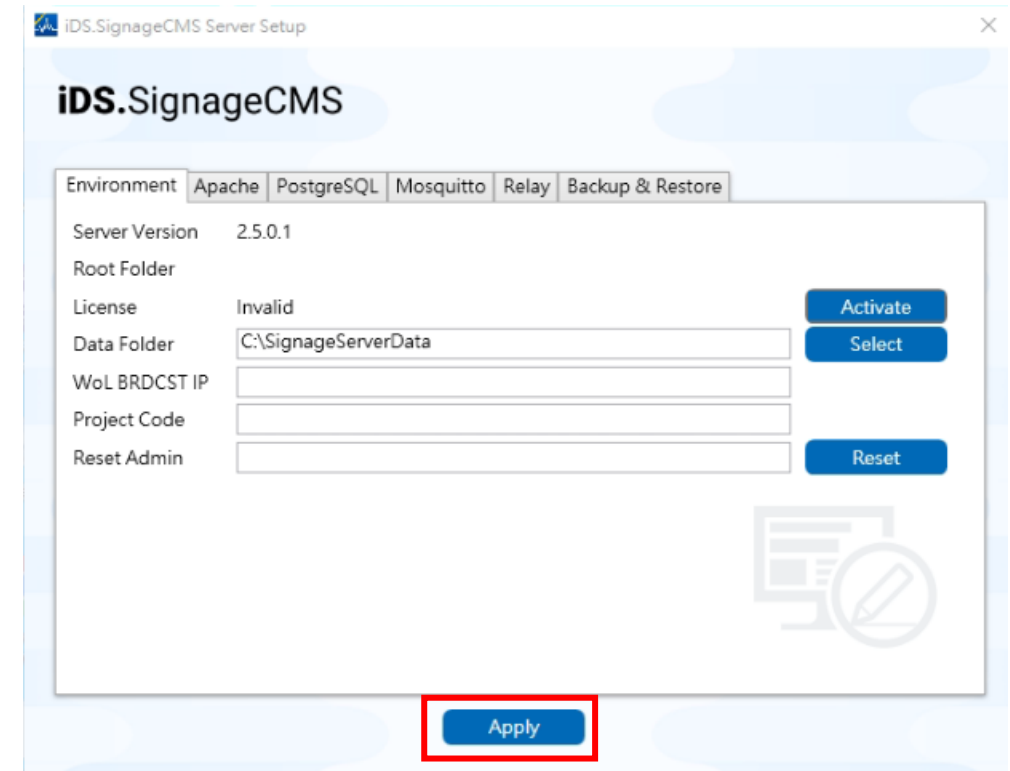


Windows Server Installation

5. Click Finish button.

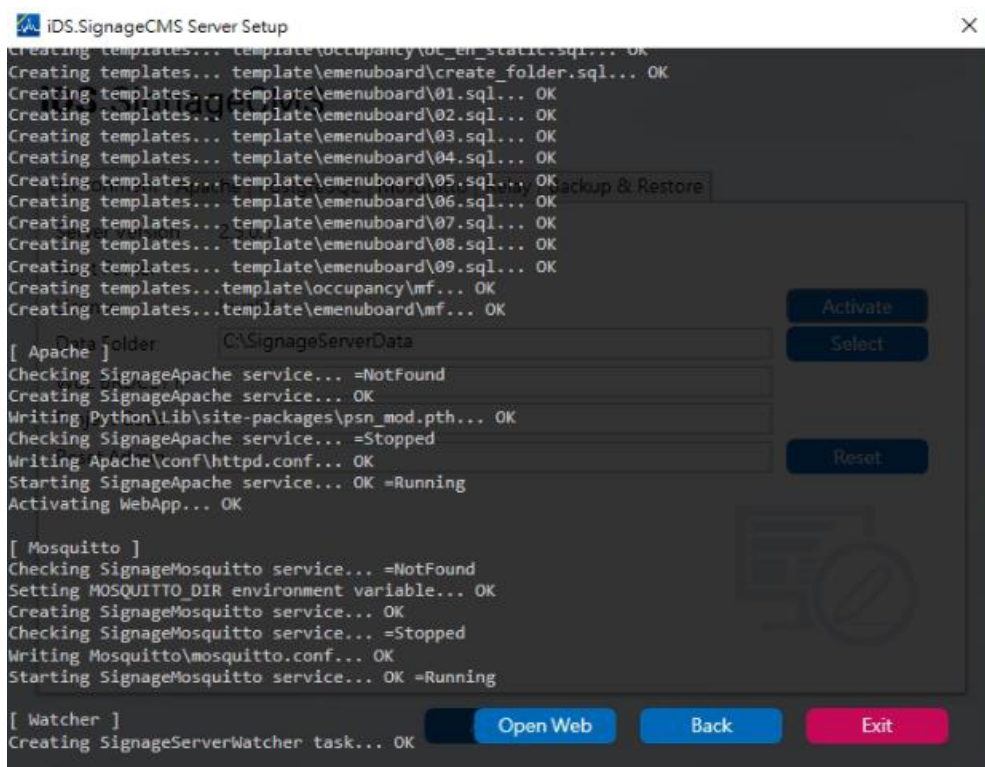


6. Click Apply button.

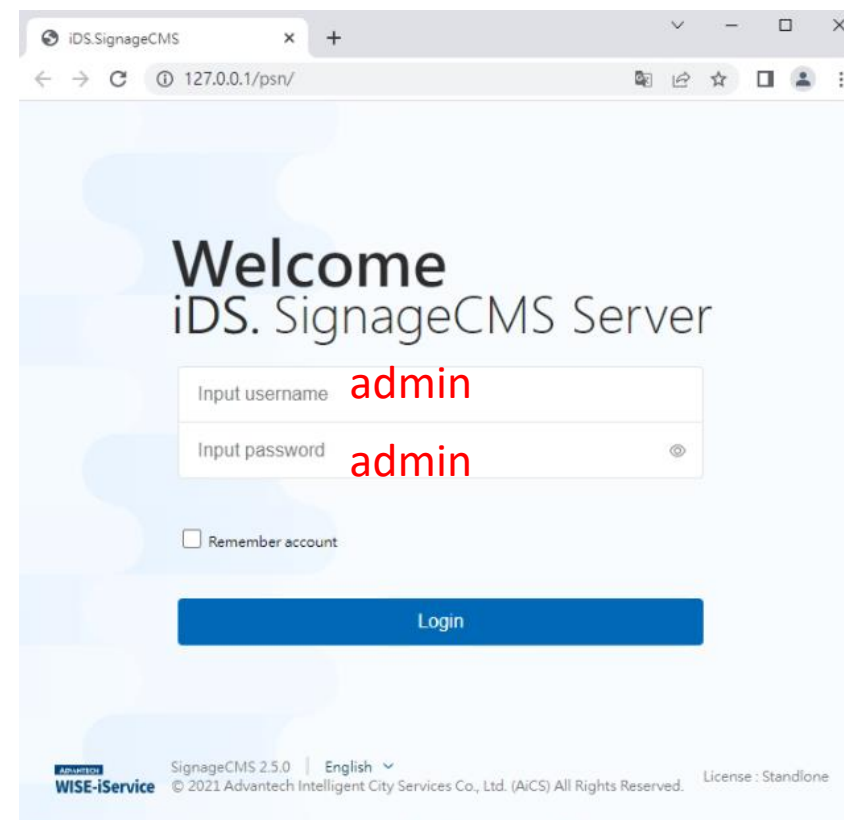


Windows Server Installation

7. Click Open Web button to open browser.



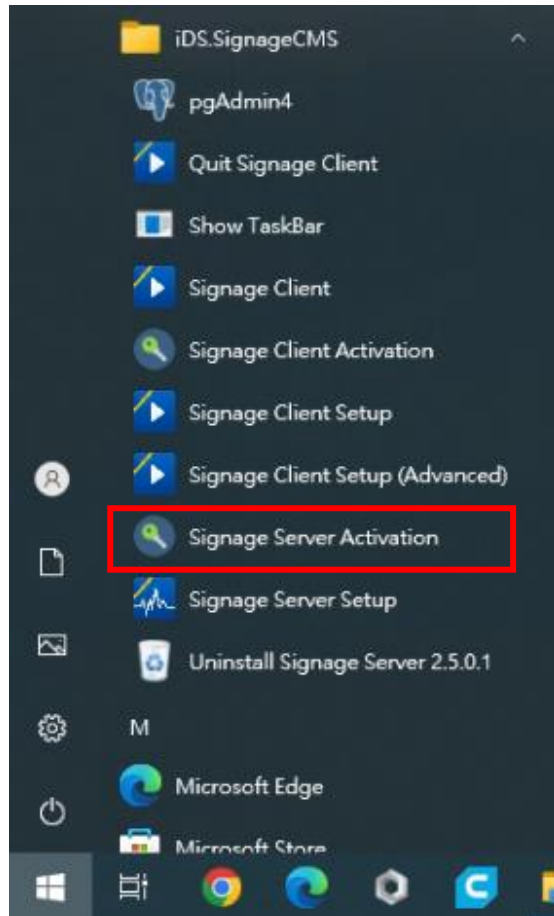
8. Input login information.



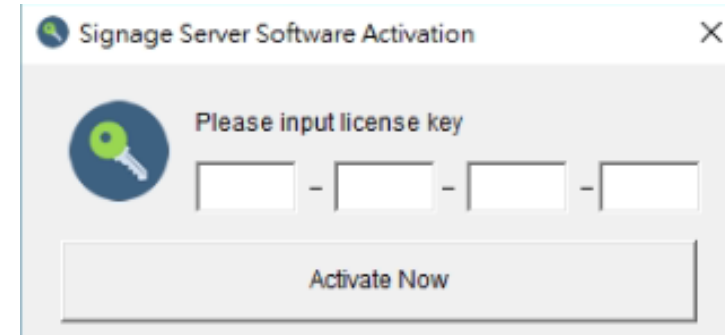
Windows Server License Activation

1. Click Signage Server Activation icon.

P.S. No Need License in 10 clients

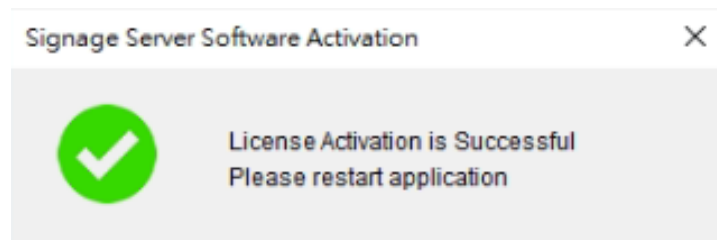


2. Plug the Lan cable, Input 16 digital code.

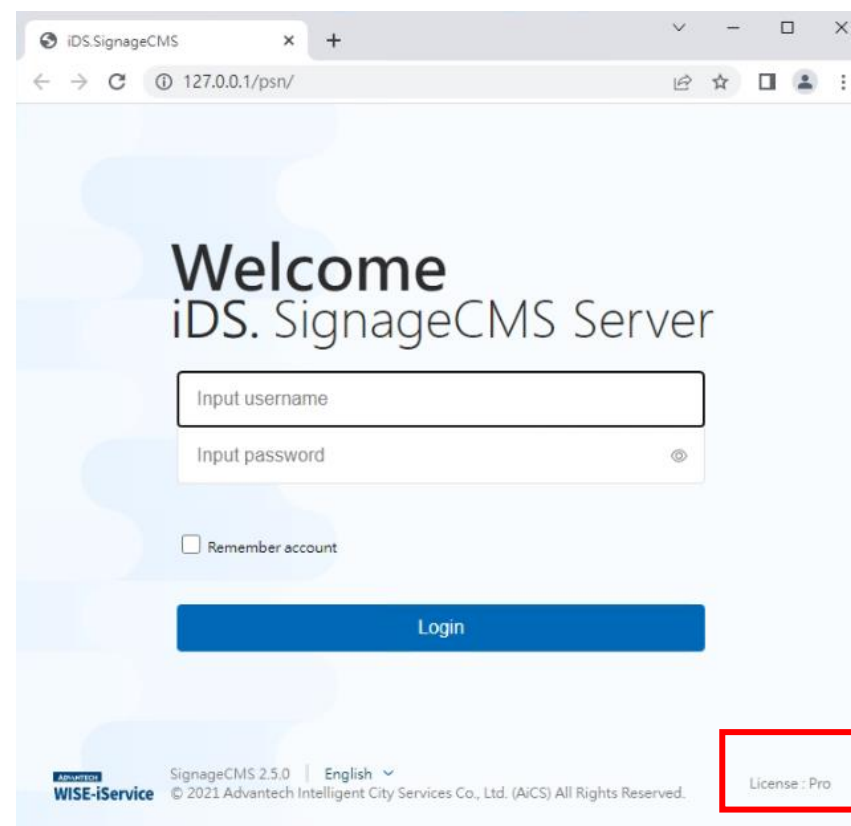


Windows Server License Activation

3. It will show successful message.

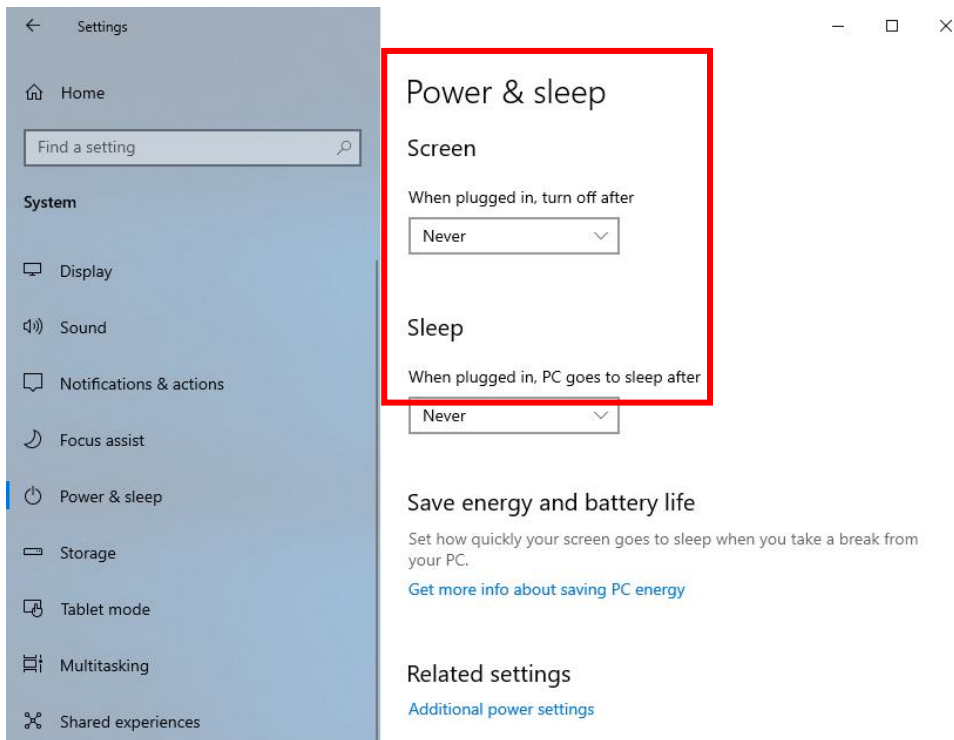


4. Restart service in server setup page, then goto the login page, you will see the license version.

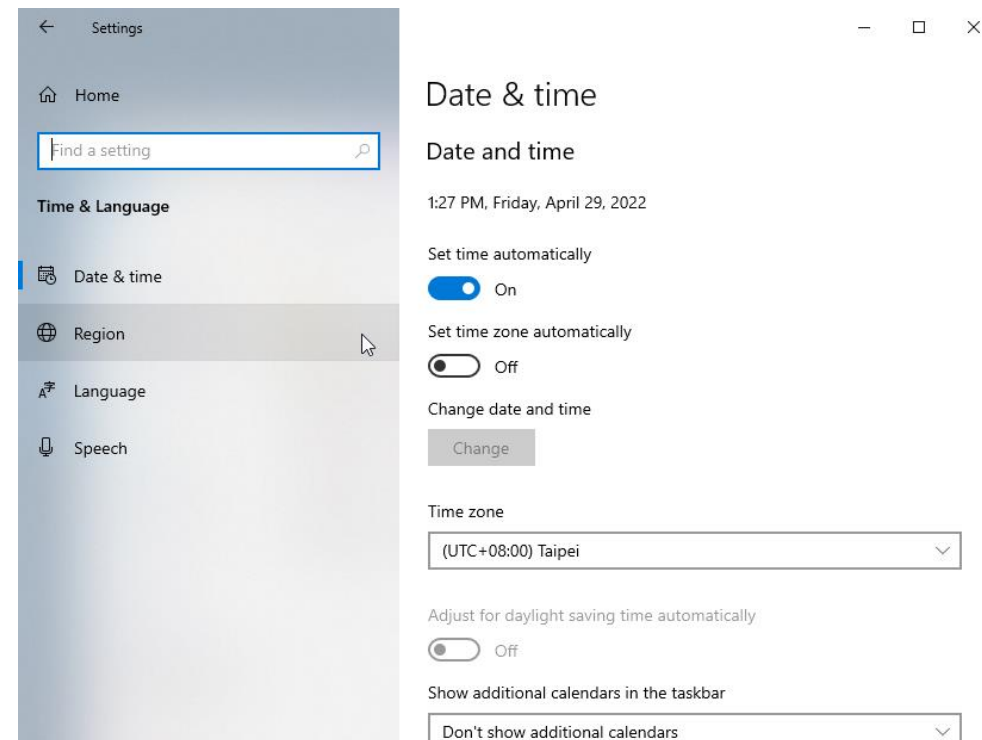


Windows Setting

1. Setup the screen and Sleep mode on never of Power & sleep function.

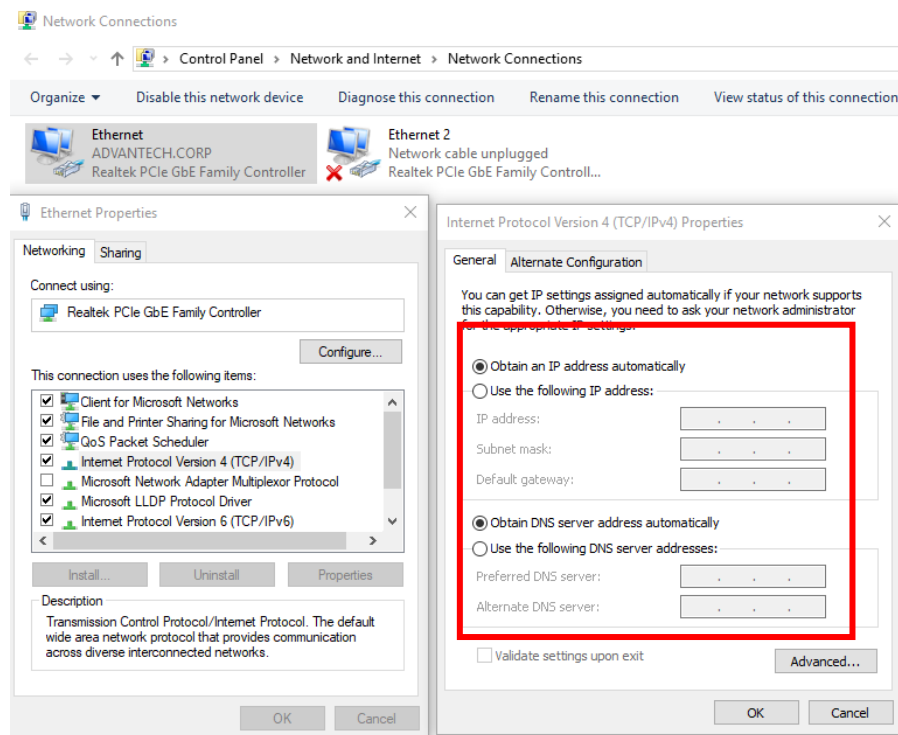


2. Adjust the Location / Date / Time on current Country and City. Turn off daylight saving time
P.S. play content will be early or late if it incorrect adjustment.

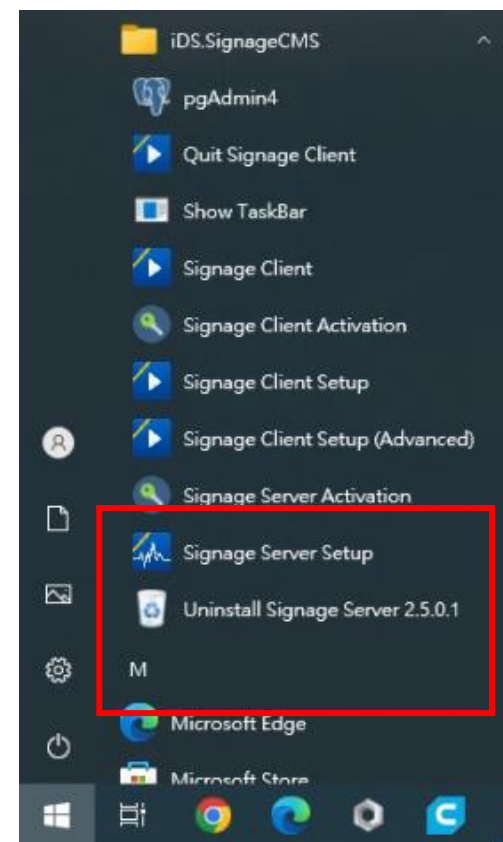


Windows Setting

3. Setup an static IP address for future access via browser.



4. Select Signage Server Setup on Windows Menu.



Windows Server Quick Start Guide

5. Press Apply button to write the new config file to system.

iDS.SignageCMS Server Setup

iDS.SignageCMS

Environment Apache PostgreSQL Mosquitto Relay Backup & Restore

Server Version 2.5.0.1

Root Folder

License Invalid **Activate**

Data Folder C:\SignageServerData **Select**

WoL BRDCST IP

Project Code

Reset Admin **Reset**

Apply

6. Input login information.

iDS.SignageCMS

127.0.0.1/psn/

Welcome iDS. SignageCMS Server

Input username

Input password

Remember account

Login

ADVANTECH WISE-iService SignageCMS 2.5.0 | English
© 2021 Advantech Intelligent City Services Co., Ltd. (AICS) All Rights Reserved. License : Pro

Co-Creating the Future of the IoT World

